

PLAT NO. 37

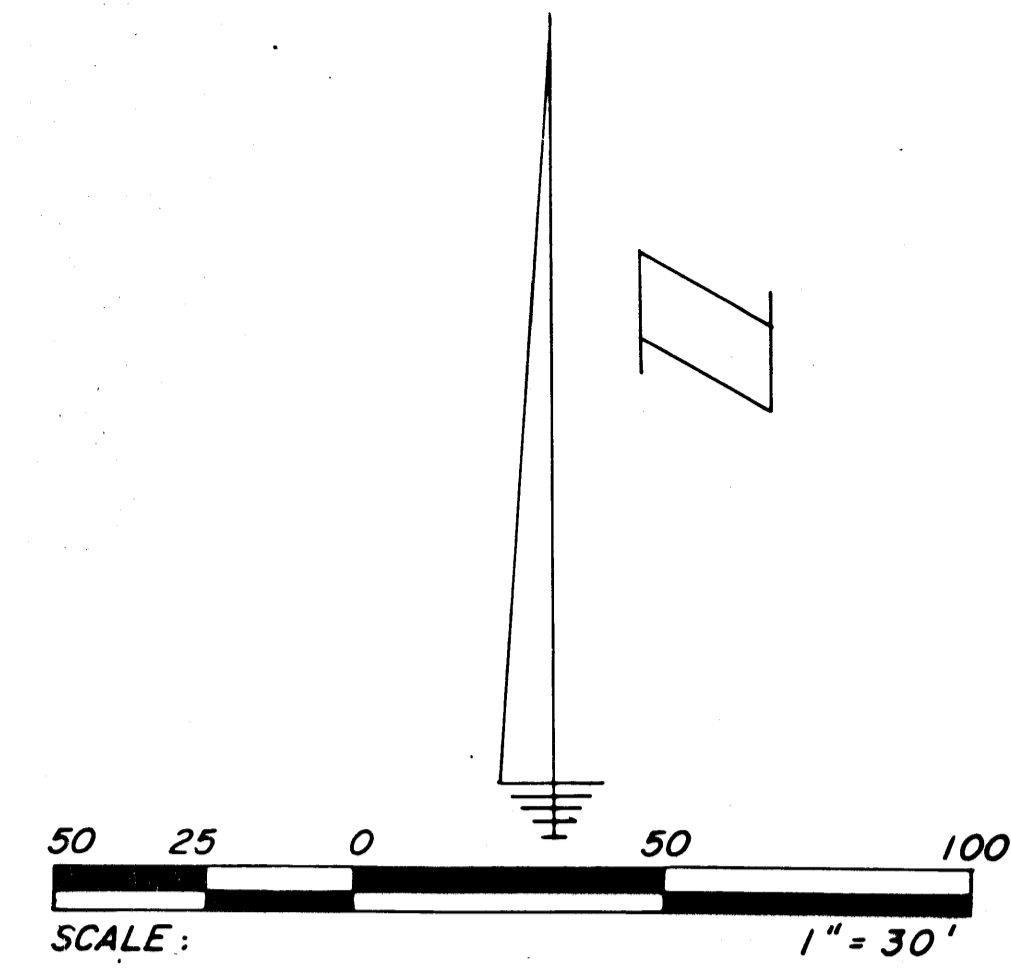
BEING PARCEL NO. 31B

MARTIN DOWNS P. U. D.

LYING IN SECTION 18, TWP.38S, RNGE.41E

MARTIN COUNTY, FLORIDA

UNPLATTED



I, Marsha Stiller, Clerk of the Circuit Court of Martin County, Florida, hereby certify that this Plat was filed for record in Plat Book 11, Page 40, Martin County, Florida Public Records, this 15th day of June, 1988

Marsha Stiller, Clerk
Circuit Court
Martin County, Florida

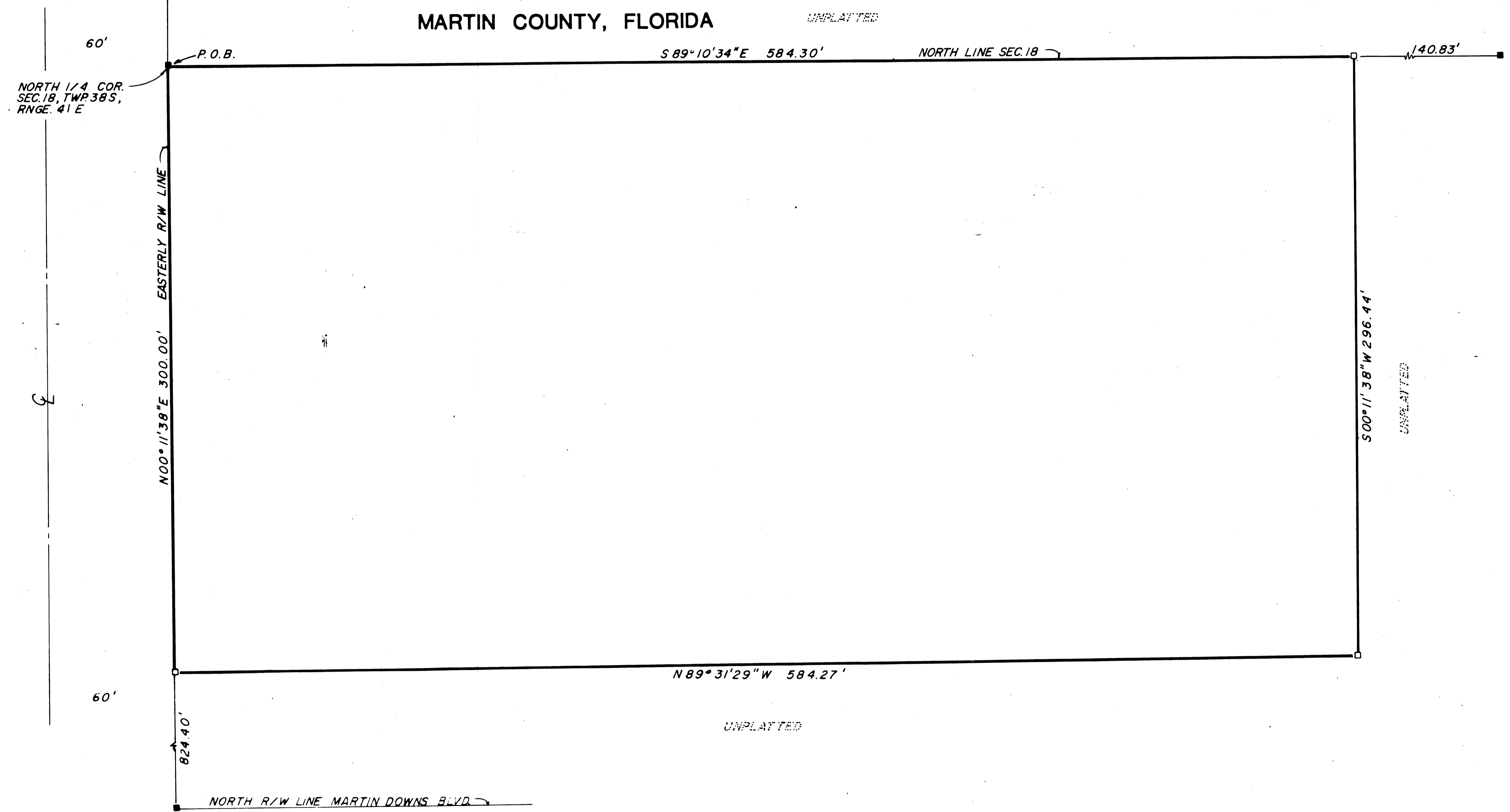
By: _____
Deputy Clerk

File NO. 716864

(Circuit Court Seal)

S.W. MATHESON AVENUE

R/W
EXISTING DEDICATED R/W
(OR BOOK 663, PAGE 1398)



LEGEND

- ----- DENOTES PERMANENT REFERENCE MONUMENT SET
- ----- DENOTES PERMANENT REFERENCE MONUMENT FOUND, UNNUMBERED